



ACADEMIC COURSE 2025-2026

THE UJI AND THE CITY



A SINGLE CAMPUS



 Visitas virtuales al campus



<https://www.uji.es/visita/en/>

www.uji.es

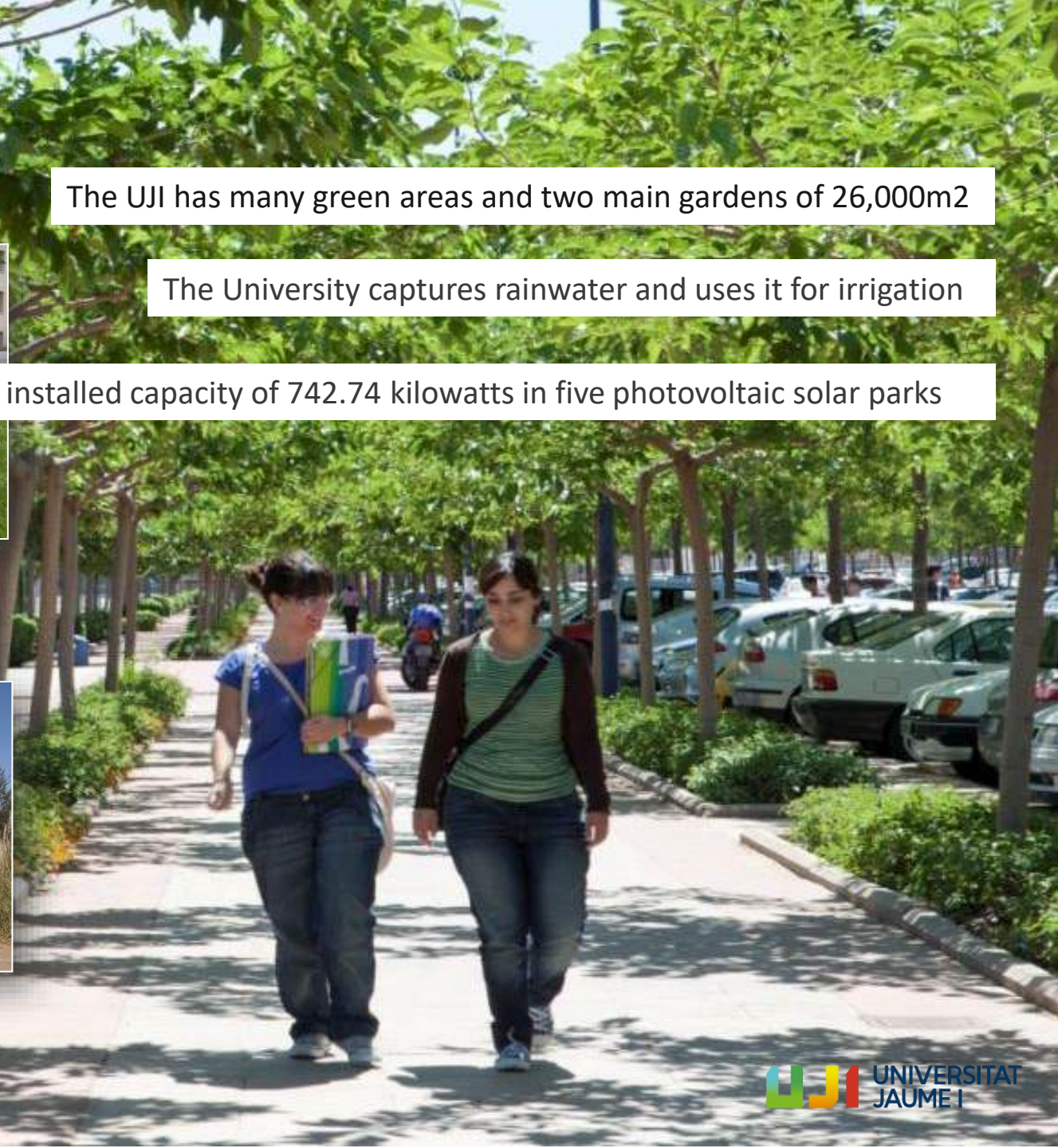


A SUSTAINABLE AND GREEN CAMPUS

The UJI has many green areas and two main gardens of 26,000m²

The University captures rainwater and uses it for irrigation

It has an installed capacity of 742.74 kilowatts in five photovoltaic solar parks



AGORA



LIBRARY



La Caixa de Vilnius





AUDITORIUM

SPORTS AREA: 95.000m²



GENERAL INFORMATION

- 300 international students/ year
- Academic tutor for every degree
- [UJI Student card](#)
 - Access to library, [sport facilities](#), [sport courses](#)...
 - Cheaper membership for courses
- [ESN card](#)
 - 15€
 - Access to numerous events/ trips
 - Discounts with many partners for 12 months (Flixbus, ALSA, Ryanair,...)



STUDIES

Faculties



- Faculty of Health Sciences
- Faculty of Humanities and Social Sciences
- Faculty of Law and Economic Sciences
- School of Technology and Experimental Sciences

LANGUAGES

- Spanish: A2
- English: B2 (only if you take English courses)
- Spanish courses
 - intensive course in the beginning of the semester
 - Semi- intensive course during the semester

Courses

- 50% must be from the degree you've been nominated for
- The rest can be from any degree
- [Courses in English](#)

ACCOMMODATION

The UJI has an Accommodation Directory, a public database designed to help members of the University community find accommodation. Some options are:

- [Private residence on campus](#) (€543 – 813)
- Flat sharing
- Accommodation in families (€500)

Comparative of the cost of living in Castello in a **flat shared with other students**:

- Castello €200-400
- Valencia €350-500
- Barcelona €500-600

If you are looking to live in a complete apartment, the price can range from 700 to 1000 euros depending on the area and the characteristics of the apartment.

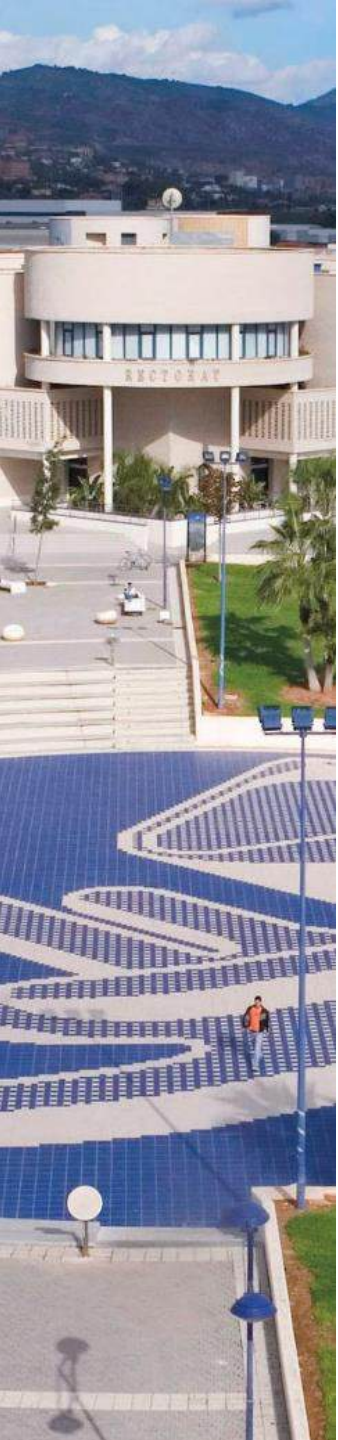


INTERNATIONAL RELATIONS OFFICE

The ORI is the office responsible for exchange programs with Europe, Asia, North America, Latin America, Africa and Oceania. In addition, it carries out several programs to promote the integration of foreign students and visitors into the university community, such as the Family Program, Mentoring Program, Scholarship Program for AL Master's and PhD students, faculty mobility, Staff Week, welcome week for incoming students, among others.

Contact us at: incoming@uji.es





WELCOME DESK

The University has a comprehensive support and advice system for international students (and scholars): **Welcome Desk** at the International Relations Office.

Visitors and Student receive orientation before, during and after their stay regarding administrative and other procedures.

Contact us at: welcomedesk@uji.es



[International website](#)

THE CITY OF CASTELLÓ

Castelló is situated 65 km north of Valencia and 285 km south of Barcelona.



THE CITY OF CASTELLÓ

Is a beautiful capital of a province of 170.000 inhabitants that lies between the Desert de les Palmes hills and the Mediterranean Sea, and it is surrounded by orange groves.

Castelló has a mild Mediterranean climate, with a pleasant temperature of around 27°C in the summer and 18°C in the winter. Castelló enjoys more than 300 sunny days a year.

120 KMS OF EXCELLENT BEACHES



CASTELLO IS A VERY SAFE CITY



Castelló

CASTELLO AND ITS SURROUNDINGS



Peñíscola



Morella

NEAR THE CITY OF CASTELLO



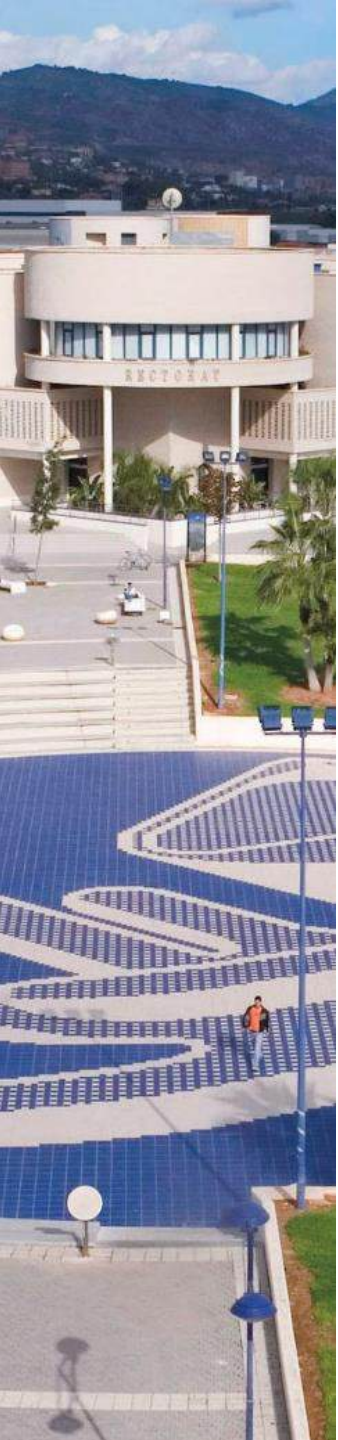
Columbretes Islands

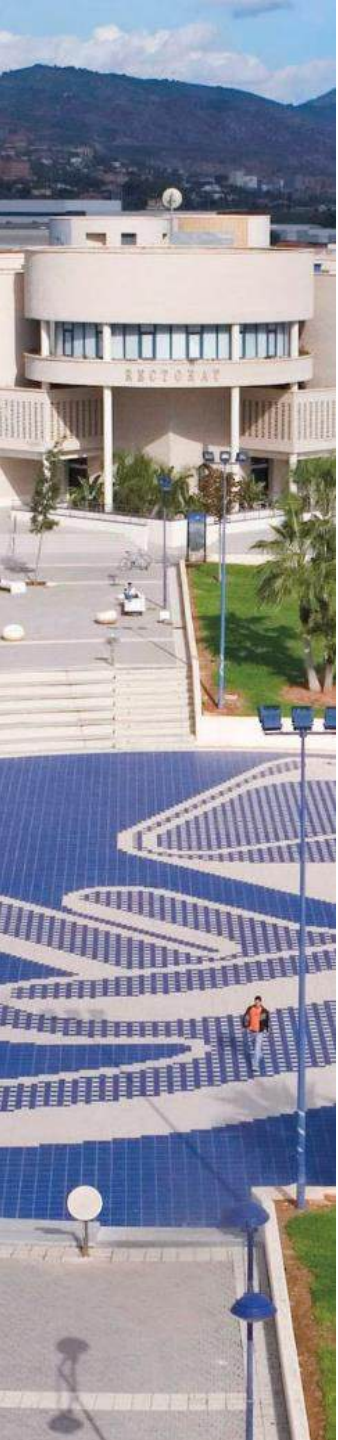
Ciudad de las Artes y las Ciencias (Valencia)

Coves Sant Josep (Vall d'Uixò)

APPLY

- Nomination deadline
 - 15th of June
 - 15th of November
- Application deadline
 - 2 weeks later



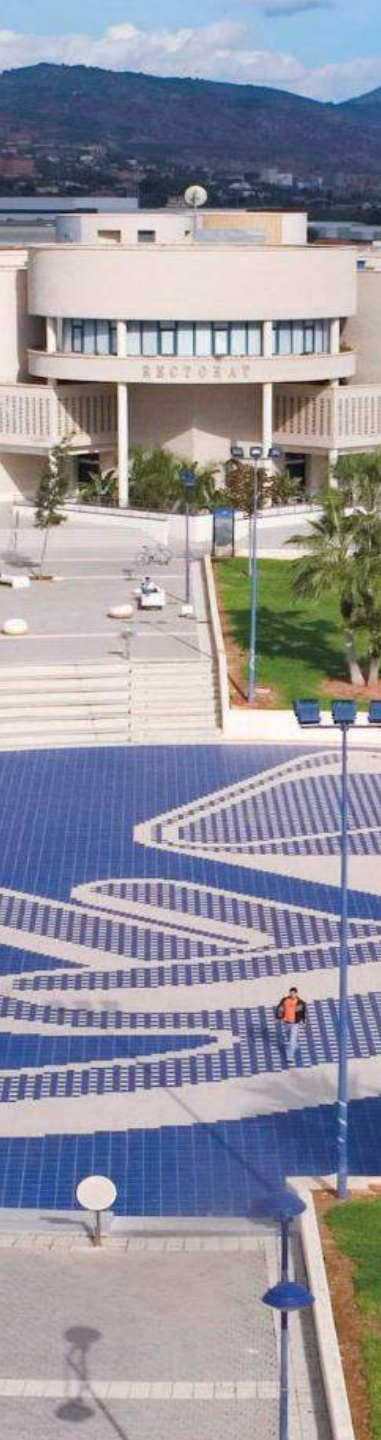


Questions?



Questions

- Praktikumsmöglichkeiten
 - Gibt es schreibt eine Email an: incoming@uji.es & gonellm@uji.es
- Wie sieht es mit der Kurswahl aus? Werden wir die Kurse bekommen, die wir bereits angegeben haben oder gibt es noch einen weiteren Prozess?
 - I.d.R. bleiben die Kurse so, aber die offizielle Kursliste für das nächste Semester wird erst im Juli veröffentlicht. Sollten euch Kurse nicht gefallen, könnt ihr sie auch noch bis Oktober nach Rücksprache wechseln.
- Wie groß sind die Kurse/Klassen? (Schülerzahl)
 - Kommt auf den Kurs an genau wie die Anwesenheitspflicht.
 - Zwischen 20-60 ist alles möglich
- Wie erreicht man die Universität am besten?
 - Tram, Bus, [Fahrrad](#)
- Ist es möglich, in Castellón ein Auto für Ausflüge zu mieten?
 - Ja aber man kommt auch mit Bus und Bahn sehr gut rum (die Züge hier fahren sogar)
- Kann ich mich im Voraus für Sportaktivitäten von der Uni oä. anmelden?
 - Maximal 1 Woche vorher, sobald die Immatrikulation abgeschlossen ist und ihr euren Studentenausweis habt



MORE INFORMATION:

Website UJI International
www.uji.es/internacional

International Relations Office
incoming@uji.es

Welcome Desk
study@uji.es
welcomedesk@uji.es