

2026/2027

# STUDY OFFERS FOR INTERNATIONAL STUDENTS



UNDERGRADUATE - PHD

We would love to welcome you to the Faculty of Education and Arts! We offer a variety of exciting courses and packages in some of Norway's most beautiful landscapes and friendly campuses!



**NORD**  
University

**NUORTTA**  
universiteit

**NOERHTE**  
universiteet

Faculty of  
Education and Arts

# ABOUT US

The Faculty of Education and Arts (FLU) is the largest Faculty at Nord University. We provide an inclusive and high-quality learning environment in a research-based education environment. Our students and staff are based in diverse campuses in stunning locations!

Nord University is located in Sámeednam/Saepmie (the place names for the region of the Sámi people) and is responsible for research and development of Lule and South Sámi languages and culture. This is important to us.

**We eagerly welcome international students and staff every year!** In this brochure, you will find the exciting courses and packages that we offer. They complement high quality primary teacher training, kindergarten teacher training, sports science studies, music education, theatre and more! **Exchange students fluent in Danish, Swedish or Norwegian can also apply for admission to single courses taught in Norwegian!**

Our classes are small and our students can easily interact with the teaching and administrative staff. International students are a valued part of Nord University and bring unique perspectives to our campuses and classrooms. **We look forward to meeting you!**

We are also proud of our external partnerships, including within the SEA-EU European University Alliance and the network of Universities of the Arctic (UArctic).

Read more about the Faculty here:

<https://www.nord.no/en/about/faculties-and-centres/faculty-of-education-and-arts>





## NORD UNIVERSITY KEY FIGURES



**11.300**

Students



**8**

Study locations



**1.450**

Employees



**2.175**

Candidates



**4**

PhD Programmes

More than  
**200**  
PhD research fellows



**36**

Bachelor's Programmes



**34**

Master's Programmes



**5**

Faculties

- Faculty of Biosciences and Aquaculture
- Faculty of Education and Arts
- Faculty of Social Sciences
- The Faculty of Nursing and Health Sciences
- Nord University Business School

# Study locations

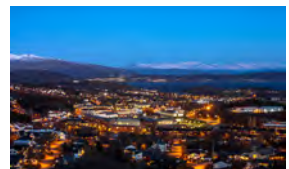


## Campus Bodø

Bodø population: approx. 51 000 • Student population: approx. 6000  
[www.nord.no/en/about/study-locations/bodo](http://www.nord.no/en/about/study-locations/bodo)

The university campus is located in the suburb of Mørkved, nine kilometers from Bodø city centre. In addition to its state-of-the-art teaching and research facilities, Nord University Bodø offers excellent student housing, with over 1000 student apartments, most within walking distance of university buildings. Mørkved supports a thriving and diverse student community, and offers great opportunities for outdoor activity and socializing. The city of Bodø is the capital of the county of Nordland. Bodø airport is located within walking distance of the city centre. Bodø was a European Capital of Culture 2024.

Adventure Knowledge	page 6-7
Experience English Language and Literature	page 8
<i>COMING: Norwegian and Indigenous Language and Culture</i>	page 9
Adventure Challenges	page 11
Sports science courses	page 12-13
Single courses and PhD courses	page 22-23



## NORD UNIVERSITY'S ACADEMIC CALENDAR:

Autumn semester: August – December, including examinations

Spring semester: January-June, including examinations



# Campus Levanger

Levanger population: approx. 20 000 • Student population: approx. 2000

[www.nord.no/en/about/study-locations/levanger](http://www.nord.no/en/about/study-locations/levanger)

Nord University's campus in Levanger is located at idyllic Røstad, within walking distance of the Levanger city centre. The campus offers a close-knit learning environment and a lively student community. The state-of-the-art teaching and research facilities include a sports centre with a full-length pool and a 11 m climbing wall. Levanger and its surroundings offer great opportunities for outdoor adventure and cultural experiences. Trondheim International Airport is a 50-minute train ride away from Levanger.

Sports science courses	page 12-13
Nordic and International Perspectives on Teaching and Learning	page 14-15
Outdoor Studies	page 16-17
Music	page 18-19
Acting and Devising	page 20-21



# Semester packages



## ADVENTURE KNOWLEDGE (30 ECTS)

### Autumn – undergraduate – campus Bodø

Are you an adventurer? Do you love a challenge? Can you imagine the thrill of experiencing the blue ice of Svartisen glacier or kayaking the crystal waters of Nordland's beautiful lakes? This package is designed for students who want to learn about nature through experiencing it first-hand. Adventure Knowledge is an interdisciplinary program, which gives students insights into the cultural heritage, history and nature of Northern Norway.

The program consists of three 10 ECTS modules:

- ENT102L: Experience of Nature
- ENT104L: Experience Pedagogy
- ENT105L: Experience of Art, Architecture and Cultural Knowledge

Are you a student who wishes to work with social work or education, within the tourism sector, or maybe the cultural sector? Then our Adventure Knowledge package is for you!

Read more about the programme here:  
[www.nord.no/en/studies/adventure-knowledge-shorter-programme](http://www.nord.no/en/studies/adventure-knowledge-shorter-programme)



Svenja from Germany

*"Hiking, climbing, and experiencing nature in different ways is very important for me. I'm currently taking a double degree at the University of Bamberg: teacher education and psychology - but decided to apply for an exchange semester in Norway." Svenja says. «This experience has been amazing and is something you cannot get or experience at home. I was a bit afraid of studying in English before coming here, but everything has gone very well. You grow academically and personally when studying abroad. I've also learned a lot of valuable lessons as a teacher in training which I take with me to Germany."*



Foto: Dagmar G. M. Dahl

*The Department of English is part of the Faculty of Education and Arts. When you choose an English semester exchange package at Nord, you will get to explore the English language, its literature and cultures, and how these affect society, in an inclusive, student-centered environment.*

## EXPERIENCE ENGLISH LANGUAGE AND LITERATURE (30 ECTS)

While studying English in Bodø, you will share classes with Norwegian students, where everyone will be working together to improve their knowledge of English. You will also benefit from a small-group conversation class designed just for international students who wish to make rapid improvements. Our classes are taught at a high level and at an international standard, making it possible for this package to fit into a wide variety of degree programmes. *Both semesters take place on the Bodø campus.*

### **Experience English Language and Literature – Autumn – undergraduate:**

SP171L British Studies for Bachelor of English, 15 ECTS

SP203L Business English, 10 ECTS

SP123L International English, 5 ECTS

### **Experience English Language and Literature – Spring – undergraduate:**

SP172L American Studies for Bachelor of English, 15 ECTS

SP123L International English, 5 ECTS

ENG2021 English Didactics, 15 ECTS



# NORWEGIAN AND INDIGENOUS LANGUAGE AND CULTURE (30 ECTS)

**Autumn – undergraduate - campus Bodø**

***This package will not be offered in 2026-2027. We hope that it will be available for the following academic year and welcome enquiries and expressions of interest from our partners to [fluinternational@nord.no](mailto:fluinternational@nord.no)***

Did you know there is an Indigenous people in the Nordic countries? Are you interested in learning some Norwegian and Saami languages? Are you interested in the connection between land and people? In this semester package, you will learn the basics of Norwegian (bokmål) through very interactive classes in which we study the grammar and practice together. After the course you will be able to read and speak basic Norwegian.

We will also dive into the global Indigenous world located in Sápmi in Bodø. You will learn about the Saami Indigenous languages and culture and build an understanding of Indigenous and traditional world views, places of cultural heritage and traditional handicraft. How do Western and Indigenous perspectives come into conflict? Come and find out! We offer a unique experience of Saami culture – together with other international students. You will also learn about the roots of the Saami languages and even to greet and count. You will also produce your own Saami ornament of *tjiehtjere-måara*. Classes consists of several excursions and visits to places of cultural heritage in the region.

## **Discover Saami at Nord!**

The package consists of:

Norwegian Language and Culture, 20 ECTS

Indigenous Languages and Cultures in Northern Norway, 10 ECTS



# ADVENTURE CHALLENGE

(20 ECTS + 10 ECTS ELECTIVE)

## Spring - undergraduate - campus Bodø

Ice climbing. Mountain hiking. Winter bathing. What happens to the body when you train in extreme environments? How does the body react? What happens with the mind? Come to Arctic Norway to learn and explore!

JANUARY AND FEBRUARY: Preparation on location of choice and online teaching.

MARCH: Compulsory participation in hiking tours, etc. in Nordland/Bodø, Norway. All students are required to arrive in Bodø by the last week of February. Students can travel back to their home university after March 31st.

APRIL AND MAY: Individual work on location of choice and online teaching.

COSTS: Semester fee and own equipment for hiking tours, etc. We recommend the course for students who have some degree of experience of outdoor life.

PRACTICAL: A comprehensive list of clothes/shoes, etc will be sent out before the programme starts.

The course consists of field trips and practical exercises such as snow activities, winter hiking and climbing, ice bathing and free diving in the surroundings of Bodø. You will learn about the body's physical, cognitive, mental and social responses to activities in extreme environments.

The course consists of 20 ECTS and can be combined with one of the 10 ECTS courses within "Strenght and conditioning", see page 11. Which course that alligns with the timeframe for adventure challenge is under consideration.



## SPORT SCIENCE (30 ETCS)

See all the outdoor life and sports packages we offer:

[www.youtube.com/watch?v=nPDg5PFjTaY](http://www.youtube.com/watch?v=nPDg5PFjTaY)

### Autumn - undergraduate - campus Levanger

These two courses make up the 5th semester in our Faculty's bachelor programme in Sports Science.

#### **IDR2013 Motor Skills and Sport Psychology in Science, 15 ECTS**

Knowledge of motor skills and sports psychology is fundamental for athlete development in sports. In this course, you will learn about scientific principles and methods used to understand key concepts of performance development.

#### **IDR2014 Physiology and Physical Abilities in Sports Science, 15 ECTS**

This course will provide you with critical insight into specific physiological factors affecting training and adaptation. Enrich your knowledge of physical training through various scientific lessons related to performance development.

# STRENGTH AND CONDITIONING (30 ECTS)

## Spring – undergraduate – campus Bodø

How can we optimize training for children and youth? How do we prevent and rehabilitate sports injuries? And how can technology help us test and develop physical performance? Come to Nord University and explore the science and practice of strength and conditioning!

Each course includes digital modules in a learning path, consisting of pre-recorded video lectures, quizzes, assignments, required readings, and one On-campus gathering week (Monday-Friday) that primarily focus on practical instruction and include relevant professional methods and hands-on activities. Calendar week 6, 12 and 17 will be with attendance.

### **IDR2023 Physical activity and training for children and adolescents (10 ECTS) Calendar week 17**

This course focuses on how to work with children and youth in sport and training contexts to promote healthy participation, development, and learning. You will learn about physical and motor development, theories of motor learning, and how to plan long-term training programs that support growth and skill acquisition.

### **IDR2024 Sport Injuries and Rehabilitation (10 ECTS) Calendar week 12**

Learn about common risk factors for sports injuries and effective prevention strategies. The course introduces the fundamentals of rehabilitation following injury or surgery and covers the physiology that underpins recovery and return to sport.

### **IDR2025 Fitness Testing and Coaching Technology (10 ECTS) Calendar week 6**

In this course, students will learn how to perform and interpret the results of the most common physiological tests. Practical lessons will take place in our laboratory. Students will learn to perform and interpret the following tests: maximal oxygen consumption, lactate profiling, maximal heart rate, jump height, rate of force development, sprint speed and maximal muscle strength.



## NORDIC AND INTERNATIONAL PERSPECTIVES ON TEACHING AND LEARNING (30 ECTS)

### Autumn – undergraduate – campus Levanger

No reason to stay inside! Do you want to add an exciting, international dimension to your teaching expertise while you experience Norway's spectacular landscape first-hand? Redefine and expand your understanding of education and learning by engaging with nature, and acquire new perspectives by immersing yourself in the history, culture and language of Norway. This semester package emphasizes practical skills and knowledge that will enrich every student's professional profile.

This is a course intended to develop knowledge and understanding of Nordic and international perspectives on teaching and learning in nursery schools/kindergarten, primary and lower secondary education. It has a particular emphasis on the region's geographical position and

natural surroundings in terms of wildlife, environmental issues, tradition and Indigenous culture, and how these conditions influence aspects of childhood and education.

The course offers an important contrastive dimension in terms of developing one's awareness of their own culture and other cultures' perspectives and attitudes to childhood, teaching and learning.

*Our academic staff employ various teaching methods and a range of learning activities. These include lectures, discussions, group work, student presentations in seminars and field excursions. Learning is based primarily on student activity, using methods such as "inquiry based learning" and "experiential learning". Students are strongly involved in shaping the learning process, with an emphasis on student knowledge and experience. The programme includes 10 days of supervised professional training at a kindergarten or primary/lower secondary school. A Certificate of Conduct is required.*



Lucie from Switzerland  
Photo: Ole Johan Ramfjord

*"I chose to follow "Nordic and International Perspectives on Teaching and Learning", because for me it was very important to get to know the school system in Norway, which in my opinion is child based, learning by doing and the school outside or the concept of friluftsliv. This semester, which is based on personal experience and practice, will give you a lot of new experience and reflections about teaching but also about yourself. I had the chance to experience many new activities. Like camping, fishing, working with wood in the forest and much more. I now feel much more confident doing outdoor activities and school outside with my pupils. Because a classroom doesn't have to be within four walls."*

[www.nord.no/en/studies/nordic-and-international-perspectives-on-teaching-and-learning-shorter-programme](http://www.nord.no/en/studies/nordic-and-international-perspectives-on-teaching-and-learning-shorter-programme)



# OUTDOOR STUDIES (30/60 ECTS)

You can choose between studying friluftsliv for either one semester of your choice or for a full year (the two semesters have different curricula). Come and gain experiences of nature that last a lifetime!

## Autumn and/or Spring – undergraduate - campus Levanger

### AUTUMN:

#### FRI1001 Friluftsliv and Society, 10 ECTS

The course provides a basic theoretical introduction to friluftsliv. Students gain an increased understanding of friluftsliv as a societal phenomenon and learn about its history, traditions and development. The course also provides a unique focus on the encounter between man and nature.

#### FRI1002 Friluftsliv Theory 1, 20 ECTS

Trip planning, travel advice, safety, anticipatory thinking, risk-reducing measures and good travel routines are topics closely linked to all practical trips in this course. In addition, students gain insights into their actual acquaintance with nature and first aid. The course consists of three mandatory trips/courses: forest and mountain hiking, basic glacier course, and canoeing on flat-water and in a river.



### SPRING:

#### FRI1003 Friluftsliv Theory 2, 20 ECTS

Trip planning, travel advice, safety, anticipatory thinking, risk-reducing measures and good travel routines are topics closely linked to all practical trips. In addition, students gain insights into their actual acquaintance with nature and first aid. The course consists of five mandatory trips/ courses: skiing and avalanche course, winter hiking, sea kayaking, coastal friluftsliv, and basic climbing course.

#### FRI1004 Friluftsliv Pedagogy, 10 ECTS

This course equips students with tools to be able to plan, implement and assess friluftsliv in a safe and appropriate manner for all seasons, with different groups. Central keywords include coaching in friluftsliv, didactic relational thinking, groups and group processes, learning and teaching principles, motivation and sense of mastery.



## **SEMESTER OF MUSIC (30 ECTS)**

### **Autumn or Spring – undergraduate and graduate - campus Levanger**

Are you into music? Do you like to sing and play? Do you care about music education, or arts education in general? What if you came to Nord University to explore some new sounds, people and places for a while?

An exchange with us offers a glimpse into other ways of living musical lives and will give you fresh ideas that will feed your creativity and expand your horizons. Music studies at Nord University in Levanger offers an inclusive, student-centered environment and welcomes diversity. There is a close connection between students and the Faculty. The campus is small and friendly, with beautiful and peaceful surroundings.

The Department of Music at Nord University is part of the Faculty of Education and Arts and represents a variety of expertise in music and education. We offer bachelor and master programs in music and music education, in addition to a variety of independent courses.



We include a variety of genres, musical styles and traditions, with hands-on approaches to teaching and learning. Perhaps you are curious about vocal studies, community music, music and well-being, multimodality and interdisciplinary projects, ways to lead an ensemble, joik and Saami culture, music educational research...?

Please get in touch! We are happy to explore opportunities for tailoring an exchange experience according to your interests and wishes.

Our teachers offer an individual semester package, 30 ECTS, for music students at both bachelor and masters level on the Levanger campus.

Contact our International coordinator for more information:  
[fluinternational@nord.no](mailto:fluinternational@nord.no)



## ACTING AND DEVISING 1 (30 ECTS)

**TEA1008 - Autumn - undergraduate - campus Levanger**

How is people's inner life revealed by how they physically behave? What is the Neutral Mask? How can you as an actor develop the functional and expressive use of your voice and body? Come to Nord University to find out and learn! In this course, you will develop your presence, physicality, receptivity, sensitivity, and awareness of space, rhythm, timing, action and reaction in acting. You will also unlock your capacity to devise and perform impactful original new work. Together with other international students, you will discover an empowering, physical theatre approach to acting and creativity. You will also have practical classes with singing and music using rhythm, listening and ear training.

ONLINE AUDITIONS apply. The auditions take place shortly after the application deadline.

Applicants are required to send their CV, a picture of themselves and a letter of motivation.



## ACTING AND DEVISING 2 (30 ECTS)

TEA1009 – Spring – undergraduate – campus Levanger

Are you independent, passionate, and committed to both acting and producing work that compels, inspires and challenges the public? If yes, this semester package may be for you! The heart of the acting program is driven by curiosity, openness and a desire to experiment through play. If you want to explore improvisation, develop acting skills and creativity – consider applying. You will develop physicality and playing skills that lead up to creating original characters and situations. You will also work on playing and humanising animals. The final and longest project of the course is devoted to making an ensemble devised show that is shown to the public. You will be part of a creative ensemble that makes an original play based on a period of immersive observation of a real-life place.

Limited number of seats available.

Questions? Please reach out to us at [fluinternational@nord.no](mailto:fluinternational@nord.no)



## SINGLE COURSES

### Autumn semester 2026:

NO106L: Norwegian for Foreigners, 10 ECTS, campus Bodø

SPL123L: International English, 5 ECTS, campus Bodø

### Spring semester 2027:

NO106L: Norwegian for Foreigners, 10 ECTS, campus Bodø

NO204L: Norwegian for Foreigners Advanced, 10 ECTS, campus Bodø

SPL123L: International English, 5 ECTS, campus Bodø

## SHORT TERM / BLENDED MOBILITY

If you are looking for a short term/blended mobility course, ADVENTURE CHALLENGE is an excellent opportunity for you. The physical stay in Norway takes place in March. You study at the location of your choice for the rest of the semester.

The Faculty of Education and Arts is also involved with the delivery of Blended Intensive Programmes (BIPs). We are also keen to grow possibilities for practice-based placements for our students. We welcome expressions of interest from partner organisations so we can co-develop these fantastic short-term mobilities for our students!

Contact us at [fluinternational@nord.no](mailto:fluinternational@nord.no)

# PHD IN SCIENCE OF PROFESSIONS

Internationalisation and support for international mobility

## **Are you a PhD candidate looking for a semester abroad?**

The PhD in Science of Professions is a multi- and interdisciplinary programme, which aims to develop knowledge in, about, and for professional practice. The programme encourages empirical research within the healthcare, social work and educational professions.

The programme is characterised by an emphasis on the parts of professional studies that deal with the language, relations and actions of professional practice. The following courses are offered every year:

PRO9014 Science of Professions, Focusing on Language, Relationships and Actions, 7,5 credits

PRO9015 Philosophy of Science and Research Ethics, 5 credits

PRO9013 Design and Methods, 7,5 credits

For information about other available courses, please follow the code:



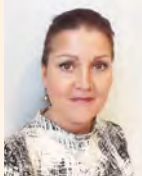
*All courses are offered in English.*

## **Are you interested in the full programme PhD in Science of Professions?**

Please contact Professor Anne Marit Valle: [anne.m.valle@nord.no](mailto:anne.m.valle@nord.no) or visit the website through the the qr-code.

# Welcome to Nord!

FOR ANY QUESTIONS, PLEASE CONTACT US ON OUR SHARED EMAIL ADDRESS: [fluinternational@nord.no](mailto:fluinternational@nord.no)



**Charlotta Langejan**  
International Coordinator



**Inger-Lise Jakobsen**  
International Coordinator



**Kristin Aaknes**  
International Coordinator



**Liselotte Karlstad Nilsen**  
International Coordinator

Please note: All courses are subject to change.

**International Office, Nord University**

E: [international@nord.no](mailto:international@nord.no) P: +47 75 51 78 70

Visit our website for more information about inbound student exchange:

[www.nord.no/en/student/student-exchange](http://www.nord.no/en/student/student-exchange)



**NORD**  
University

**NUORTTA**  
universiteit

**NOERHTE**  
universiteet